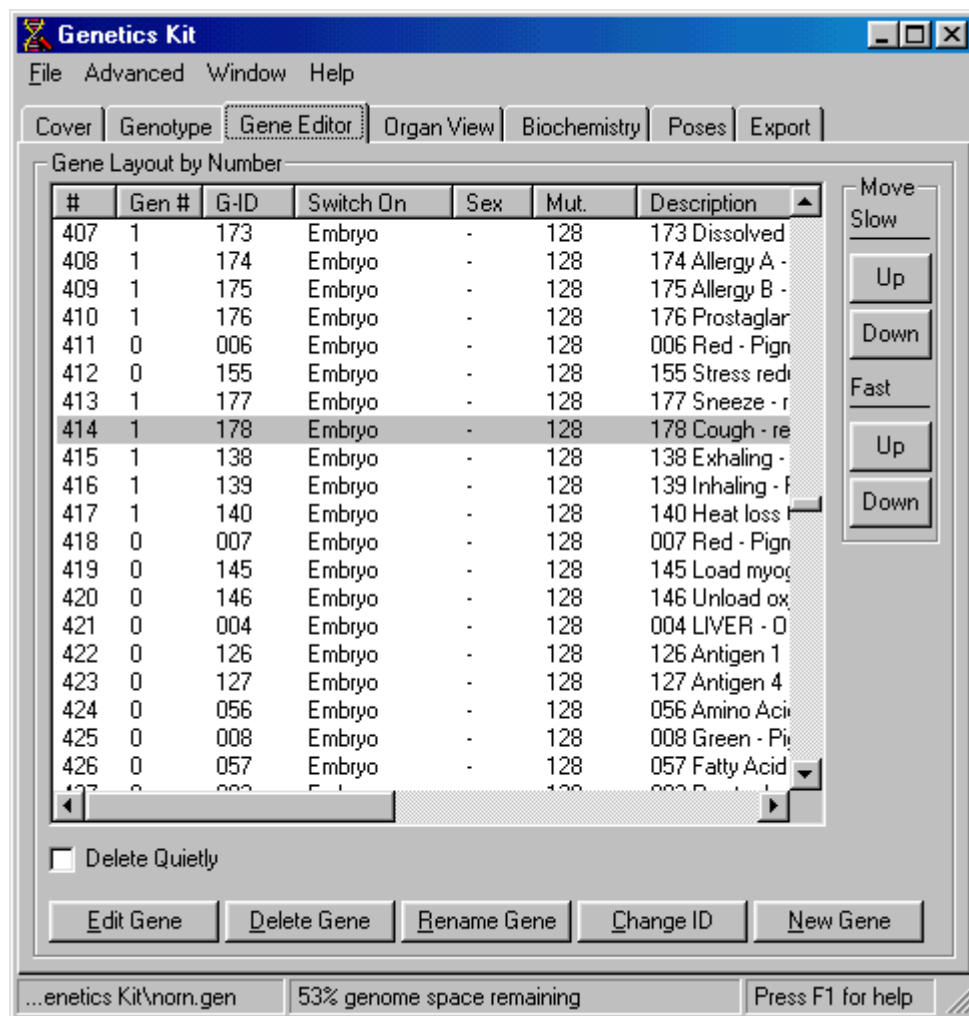
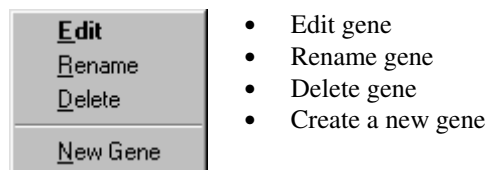


Gene Editor

Main Gene Editor window allowing the complete gene list to be viewed and modified. Genes can also be deleted or created from scratch.



Primary Gene Editor page. All editing, creating and deletion of genes takes place on this page. Genes can be selected by clicking on them. A gene must be selected before using **Edit Gene**, **Delete Gene** or **Rename Gene**. No selection is required to create a new gene using **New Gene**. Specific genes can also be edited by double clicking on their number in the left hand column of the gene list. Right clicking over the number will bring up a context sensitive menu:



In summary, the buttons and their purposes are:

Edit Gene	EDIT SELECTED GENE Edits the currently selected gene by opening its gene window. This operation can
------------------	---

also be achieved by double-clicking on a gene number in the main list:

152	U	Youth	f	U12 Uestrogen (F) - En
153	O	Youth	f	020 Oestral cycle (F) -
154	n	Youth	f	014 Sex drive (F) - Fmi

Delete Gene

DELETE SELECTED GENE

Deletes the currently selected gene. Confirmation is required. Once the gene is deleted, it is removed forever and cannot be recovered unless restoring from a backup genome file.

Rename Gene

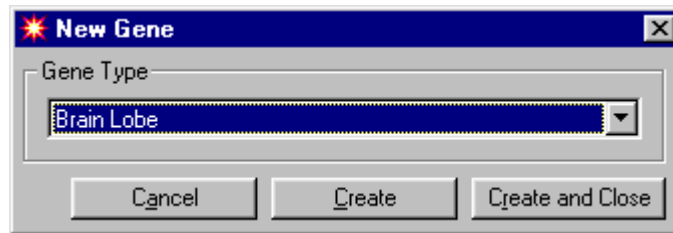
RENAME SELECTED GENE

Rename the user description for the currently selected gene. See warning below.

New Gene

CREATE NEW GENE

Opens the “New Gene” window allowing for one or more genes to be created:



There are 16 gene types. To create a gene, select the type from the drop-down box and click on the **Create** or **Create and Close** button. Using **Create** will leave the New Gene window open, allowing you to create lots of genes in one session.

WARNING!

Gene name information is **not stored** inside the genome itself, as that contains just the genetic data. Instead, all gene names (called “captions”) for any given species (Grendels, Norns, etc.) are stored in a special file called “species.gno”. When you create your own Digital DNA, new “GNO” files are made and stored in the genetics directory for each genome you make. If this cannot be found, or is separated from the original D-DNA, then the default (species.gno) is loaded and a warning issued.